



HELLENIC CMR



Dept. Cardiology, Onassis Cardiac Surgery Center and Cardiovascular MRI WG of the Hellenic Cardiac Society

ORGANIZING COMMITTEE

- Sophie Mavrogeni
- Genovefa Kolovou
- Maria Kiaffas
- Renata Mastorakou
- Anthony Aletras
- Massimo Lombardi
- Gerald Pohost

SCIENTIFIC COMMITTEE

- Sophie Mavrogeni
- Genovefa Kolovou
- Maria Kiaffas
- Renata Mastorakou
- Anthony Aletras
- Massimo Lombardi
- Gerald Pohost

12th Cardiovascular MRI w o r k s h o p

ATHENS, 22 SEPTEMBER 2012

Scientific Programme

endorsed by

and accredited by

Cardiovascular
Magnetic Resonance
ESC Working Group



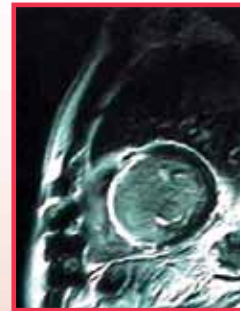
EUROPEAN
SOCIETY OF
CARDIOLOGY®



SCMR



EBAC®



Γραφιστική επιμέλεια: «Γράμμα»®, τ. 2310 926629



Eugenides Foundation
387 Syngrou Avenue, Athens, Greece

**12th Cardiovascular MRI workshop, Athens 22 September 2012**

Scientific Programme endorsed by ESC WG on cardiovascular Magnetic resonance and Society for Cardiovascular MR (SCMR) and accredited by EBAC

9:00-9:15	Welcome V. Voudris
CMR: INTRODUCTION- CMR IN CONGENITAL HEART DISEASE	
Chairpersons: P. Azariadis, M. Kiaffas, G. Papadopoulos	
09:15-09:30	<i>CMR Introduction - Sequences - Safety</i> C. Xanthis
09:30-09:45	<i>CMR in Congenital Heart Disease</i> A. Vlahos
09:45-10:00	<i>XMRI in Congenital Heart Disease</i> A. Tzifa
10:00-10:15	<i>Multimodality Imaging for PAH</i> S. Lerakis
10:15-10:30	Discussion Discussants: S. Antoniadis, C. Laskari, E. Demerouti, D. Georgakopoulos, I. Papagiannis
10:30-10:45	Coffee break
CMR IN MYOCARDITIS/ CARDIOMYOPATHIES/HEART FAILURE	
Chairpersons: E. Iliodromitis, G. Kolovou, I. Nanas	
10:45-11:00	<i>CMR in Myocarditis</i> S. Mavrogeni
11:00-11:15	<i>CMR in Heart Failure</i> A. Dalianis
11:15-11:30	<i>CMR in Thalassemia</i> E. Gotsis
11:30-11:45	<i>CMR in Nonischemic Cardiomyopathies</i> M. Kalantzi
11:45-12:00	<i>Echo and CMR in Naxos Disease</i> A. Tsatsopoulou
12:00-12:15	Discussion Discussants: S. Adamopoulos, A. Gouziouta, E. Leondiadi, E. Tsagalou V. Vartela
CMR IN CORONARY ARTERY DISEASE (CAD)	
Chairpersons: A. Dritsas, R. Mastorakou, G. Theodorakis	
12:15-12:30	<i>Coronary MRA vs Coronary CT and X-Ray Angiography</i> A. Roussakis
12:30-12:45	<i>Perfusion CMR</i> P. Danias
12:45-13:00	<i>Area at risk</i> A. Aletras

12th Cardiovascular MRI workshop, Athens 22 September 2012

Scientific Programme endorsed by ESC WG on cardiovascular Magnetic resonance and Society for Cardiovascular MR (SCMR) and accredited by EBAC



13.00-13.30	<i>Green Imaging</i> G. Pohost
13.30-13.45	Discussion Discussants: P. Georgiadou, I. Iakovou, I. Ikonmidis, O. Karapanagiotou, S. Kyrzopoulos
13.45-14.15	Light lunch
HOT LINE CMR CASES	
Chairpersons: G. Athanasopoulos, G. Karavolias, D. Tsiapras	
14.15-14.30	<i>CAD</i> N. Alexopoulos
14.30-14.45	<i>Cardiomyopathy</i> C. Bratis
14:45-15:00	<i>Adult heart disease</i> S. Polymeros
15.00-15.15	<i>Adult heart disease</i> E. Sfindouraki
15:15-15:30	<i>Adult heart disease (case)</i> K. Iliodromitis
15.30-15:45	Discussion Discussants: J. Terrovitis, S. Katsilouli, E. Siniorakis, E. Vournas
VIABILITY EVALUATION. ONE TECHNIQUE SHOW OR MULTIMODALITY IMAGING?	
Chairpersons: D. Tousoulis, I. Lekakis, G. Pohost	
15.45-16.00	<i>Echo</i> D. Aggeli
16.00-16.15	<i>CT</i> A. Kitsiou
16.15-16.30	<i>PET</i> C. Anagnostopoulos
16.30-16.45	<i>SPECT</i> J. Vasiliadis
16.45-17.00	<i>CMR</i> S. Lerakis
17.00-17.30	<i>Multimodality Imaging. Necessity or luxury?</i> M. Lombardi
17:30-18:15	Discussion Discussants: G. Karabela, A. Kranidis, K. Perreas, S. Prapas, G. Roussakis
18.15-18.30	Closing remarks G. Pavlidis